

# Liza Butts

*A Spectrum of Echoes*

Fantastical landscapes are depicted moving, shifting, and glowing. Tangled spaces that are seemingly untraversable bloom and glisten with vibrancy and energy. Using a saturated palette, the artist creates landscapes from imagery found in overgrown areas of the South, primarily in Alabama where the artist lives.

Imagery of kudzu and vines form visually dense compositions. The image spaces are tight fields of color and shapes, tapestries of marks, that form environments the artist refers to as “Fields.” The repetitive frames of the paintings—rectangles and squares—serve as a type of sequencing, informed by the artist’s interest in meditative and yogic practices that are used to access the subconscious mind and make subtle changes in the body. Memories and dreams become accessible through meditation, where phrases are repeated as a way to turn off the automatic mind and make subtle shifts in the subconscious landscape.



Figures are absent in the works. Wilderness spaces of solitude and reflection reveal subtle shifts that show themselves in patterned mark-making. The artist explores ancient myths and symbols of marshlands with titles like *Field of Rushes* (image on left), coming from an Egyptian myth of afterlife that speaks to transition and change. Marshlands serve as a metaphor for liminal in between places, hidden states of becoming, rich in growth and plant-life. Kudzu plants with their long overgrown vines that grow rapidly over terrains, hide abstract forms underneath.

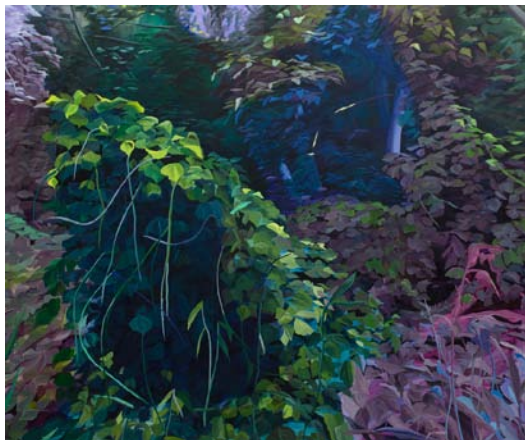
Some paintings appear to be underwater, with expressive and fluid gestures. The artist uses oil paint diluted with mediums, applied over many layers. Mark-making reveals a history and a progression, with small movements coming in and out of focus. The paint’s fluid materiality points to liminal unfixed spaces where things change, move, and adapt quickly.

The artist grapples with personal and collective pressures where tensions are held both internally and externally in the landscape, situated within a political environment that is pulled between two poles; opposite ends of a spectrum. The work also deals with the early part of an artist’s career where pressures exist that the artist must reconcile with. The work attempts to hold these tensions to allow for something to rupture and emerge so transformation can take place.

Liza Butts (\*1993, Birmingham, AL) is a graduate of Sam Fox School of Design & Visual Arts, Washington University in St. Louis, MO. She has participated in residencies at Brooklyn Arts Space, the New York Arts Practicum, and will attend a 2024 residency at In Cahoots in Petaluma, CA. She has worked at the Robert Blackburn Printmaking Workshop in NYC, and was recently awarded a Visual Arts Fellowship by the Alabama State Council on the Arts. A monograph filmed by Alabama Public TV was included in the 2023 Sidewalk Film Festival. She lives and works in Birmingham, AL.

# Liza Butts

*A Spectrum of Echoes*



## ***Circumambulation***

2024

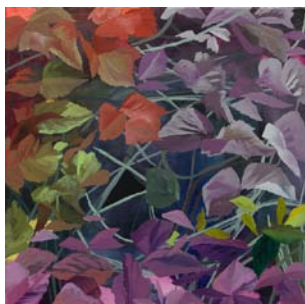
oil on paper on canvas

60 by 72 in.

(152,4 by 182,9 cm)



SOLD



## ***Locus***

2024

oil on paper on canvas

16 by 16 in.

(40,6 by 40,6 cm)



SOLD



## ***Spirits of the Bog***

2024

oil on paper on canvas

60 by 72 in.

(152,4 by 182,9 cm)

\$ 12,000

# Liza Butts

*A Spectrum of Echoes*



## *Field of Rushes*

2023

oil on paper on canvas

48 by 48 in.

(121,9 by 121,9 cm)

\$ 7,500



## *Terra Incognita*

2024

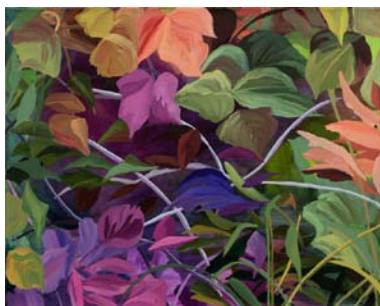
oil on paper on canvas

48 by 48 in.

(121,9 by 121,9 cm)



SOLD



## *Refugia*

2024

oil on paper on canvas

16 by 20 in.

(40,6 by 50,8 cm)



SOLD

# Liza Butts

*A Spectrum of Echoes*



## ***Melody Maker***

2023

oil on paper

40.25 by 57 in.

(102,2 by 144,8 cm)

\$ 6,000 (unframed)



## ***A Ferocious Trance***

2024

gouache on Yupo paper

framed dims: 14.325 by 15.75 in. (36,9 by 40 cm)



SOLD



## ***Gods of Nights***

2024

gouache on Yupo paper

framed dims: 13.125 by 15.5 in. (33,3 by 39,4 cm)



SOLD



# Liza Butts

*A Spectrum of Echoes*



## *Meridians*

2024

gouache on Yupo paper

framed dims: 14.25 by 14.625 in. (36,2 by 37,1 cm)



SOLD



## *An Initiation of Indeterminacy*

2024

gouache on Yupo paper

framed dims: 14.325 by 15.75 in. (36,9 by 40 cm)



SOLD



## *Threads in the Solution*

2024

gouache on Yupo paper

framed dims: 14.625 by 14.125 in. (37,1 by 35,9 cm)

\$ 1,100

# Liza Butts

*A Spectrum of Echoes*



## ***Genius Loci***

2024

gouache on Yupo paper

framed dims: 13.625 by 15.75 in. (34,6 by 40 cm)

\$ 1,100



## ***Finder of Lost Things***

2024

gouache on Yupo paper

framed dims: 14 by 14.125 in. (35,6 by 35,9 cm)

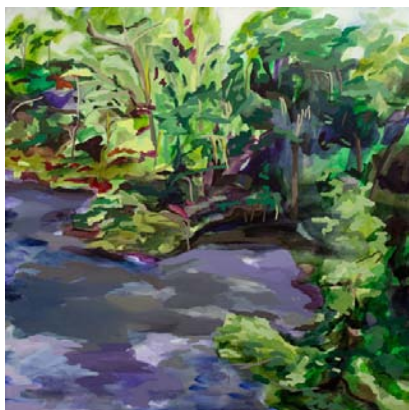


SOLD

# Liza Butts

*A Spectrum of Echoes*

available work



## *A New Deep*

2022

oil on paper on canvas

48 by 48 in.

(121,9 by 121,9 cm)



SOLD



## *Frisco Tunnel*

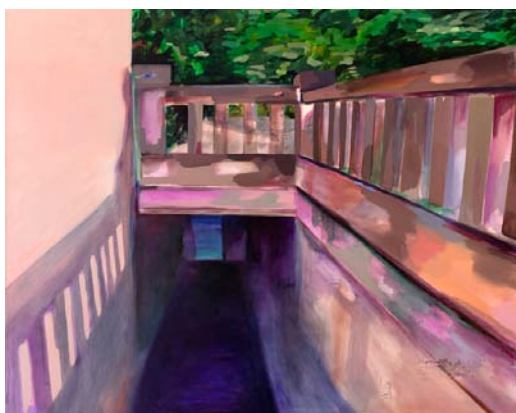
2022

oil on paper on canvas

48 by 60 in.

(121,9 by 152,4 cm)

\$ 9,000



## *Instruments of Transition*

2022

oil on paper on canvas

48 by 60 in.

(121,9 by 152,4 cm)

\$ 9,000